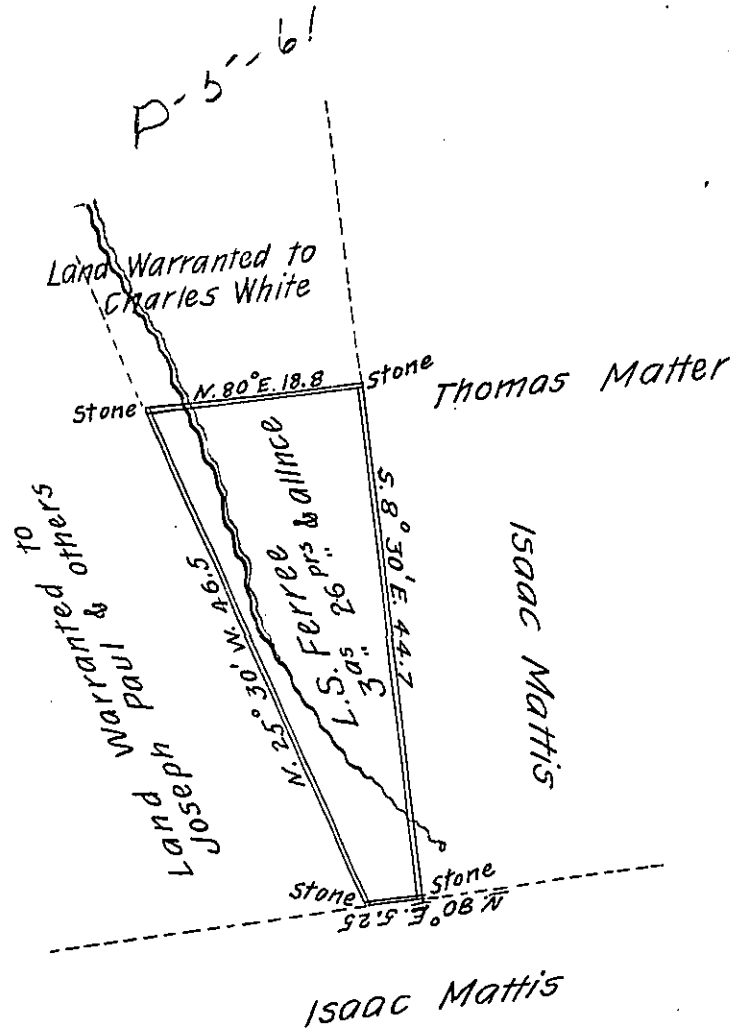


C 174-229  
D 28-28



Draft of a tract of Land containing three acres and twenty Six perches and allowance of six per cent for Roads &c. Situate on the North side of Berrys Mountain in Washington Township Dauphin County. Surveyed Jan. 15<sup>th</sup> A.D. 1870, in pursuance of a Warrant dated Oct. 8<sup>th</sup> A.D. 1869, granted to L.S. Ferree

To Jacob M. Campbell  
Surveyor General

Per { Joel B. Ferree - for  
M. R. Alleman C.S.

Examined & approved Jan. 22<sup>nd</sup> 1870.

M. R. Alleman C.S.

IN TESTIMONY that the above is a copy of the original remaining on file in the Department of Internal Affairs of Pennsylvania, made conformably to an Act of Assembly approved the 16th day of February, 1833, I have hereunto set my Hand and caused the Seal of said Department to be affixed at Harrisburg, this twenty-fifth day of October 1907

*Henry Howell*  
Secretary of Internal Affairs.